



Product Release Announcement

Product Category	CADTranslate
Product Group	NX <> STEP
Product Release Version	27.3

Document Type	Product Release Announcement
Document Status	Released
Document Revision	1.0
Document Author	Product Manager
Document Issued	11/02/2025

📍 THEOREM HOUSE
MARSTON PARK
BONEHILL RD
TAMWORTH
B78 3HU
UNITED KINGDOM

☎ +44(0)1827 305 350

📍 THEOREM SOLUTIONS INC.
100 WEST BIG BEAVER
TROY
MICHIGAN
48084
USA

☎ +(513) 576 1100

Table of Contents

History	3
Product Codes	4
Supported Application Revisions	5
Supported Operating Systems	5
Installation Process Considerations	6
Distribution Media	6
New Features / Enhancements	7
STEP - NX.....	7
Requirements.....	7
Known Limitations and Restrictions	8
NX to STEP	8
STEP to NX	8
General.....	8
Resolved Support Calls	9

History

Revision	Update Information
1.0	Initial document release for Version 27.3

Product Codes

Product Code	Product Description
NXSTP-B1	NX <> STEP Bi-directional Base Product
NXSTP-A1	NX <> STEP PMI Add-on Module

Supported Application Revisions

The following application revisions have been qualified with this release.

Application	Revision
NX Versions	2312, 2406, 2412
STEP	HOOPS 24 SP8

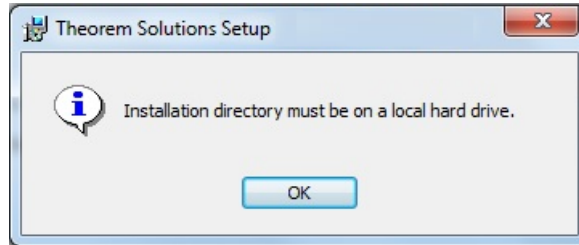
Supported Operating Systems

The following operating systems have been qualified with this release

Operating System	Qualification Status
Windows 10	Qualified and fully supported
Windows 11	

Installation Process Considerations

Starting with version 20.0 of Theorem Solutions applications changes have been made to the installation process. These changes have transitioned from a JAVA based installer package to a standard Microsoft Installer (.msi) package. A current limitation of the Microsoft msi method is that the software cannot be installed directly on to either externally mapped or network drives when installed from a client machine:



Therefore, the installation must be performed to a drive that is local to the machine itself. If you are attempting to install the software onto a network drive, then please refer to the configuration guide available from the following link:

http://www.theorem.com/documentation/Documentation/Client_Configuration.pdf.

Distribution Media

CD images of the latest release are available from the following download site. The installation media for the bi-directional product is also the same media when installing a uni-directional variant.

Product Codes	Select link to download CD images
All Product Codes for all supported versions of CATIA V5	CAD 27.3 242NX WIN.01.msi
Theorem User Interface	CAD 27.3 UI WIN.01.msi
Theorem License Manager	CAD FLEXLM 11.19 WIN.01.msi

New Features / Enhancements

The following new features or enhancements have been introduced with this release.

STEP - NX

Ref ID	New Feature / Enhancement Description
1	NX 2312, 2406, 2412
2	HOOPS 24 SP8

Requirements

The following list of Requirements are deployed with this release.

Requirement ID	Brief Description

Known Limitations and Restrictions

The following limitations and restrictions have been identified prior to release.

NX to STEP

Ref ID	Limitations and Restrictions
1	Writing AP 203 Edition 2 is support, Edition 1 is not.
2	Writing AP 214 Edition 1 is support, Edition 2 and 3 are not.
3	Writing AP 242 Edition 1 is support, Edition 2 and 3 are not.
4	PMI is not supported

STEP to NX

Ref ID	Limitations and Restrictions
1	PMI is supported using command line, but not from the UI

General

Ref ID	Limitations and Restrictions
1	The minimum supported version of FlexLM is 11.19

Resolved Support Calls


The following list of Support Calls are resolved with this release.

Support Call ID	Brief Description




THEOREM
SOLUTIONS


**UK, Europe and Asia
Pacific Regions**

 THEOREM HOUSE
MARSTON PARK
BONEHILL RD
TAMWORTH
B78 3HU
UNITED KINGDOM


 sales@theorem.com

 +44 (0) 1827 305 350

USA and the America

 THEOREM SOLUTIONS INC
100 WEST BIG BEAVER
TROY
MICHIGAN
48084
USA

 Sales-usa@theorem.com

 +(513) 576 1100

 **THEOREM.COM**