

Product Release Announcement

Product Category	CADPublish
Product Group	NX <> 3DPDF
Product Release Version	28.0

Document Type	Product Release Announcement
Document Status	Released
Document Revision	1.0
Document Author	Bruce Pittman
Document Issued	01/04/2025

📍 THEOREM HOUSE
MARSTON PARK
BONEHILL RD
TAMWORTH
B78 3HU
UNITED KINGDOM

☎ +44(0)1827 305 350

📍 THEOREM SOLUTIONS INC.
100 WEST BIG BEAVER
TROY
MICHIGAN
48084
USA

☎ +(513) 576 1100

Table of Contents

History	3
Product Codes.....	4
Current Product Codes.....	4
Supported Application Revisions.....	5
Supported Operating Systems.....	5
Installation Process Considerations	6
Distribution Media	6
New Features / Enhancements	7
NX<>3DPDF	7
Known Limitations and Restrictions.....	8
NX to 3DPDF (nxdxf)	8
NX to 3DPDF (nxdxf)	8
General.....	8
Resolved Support Calls.....	9

History

Revision	Update Information
1.0	Initial document release for Version 28.0

Product Codes

Legacy Product Codes

Product Code	Product Description
NXPDF-U1	NX Publish 3D On Demand, Interactive & Batch processing
NXPDF-I1	NX Publish 3D Interactive
NXPDF-A1	Publish 3D Configuration Tool for NX
NXCA5-A2	NX to CATIA V5 PDF Add-on Module

Current Product Codes

Product Code	Product Description
NXPDF-U1	NX Publish 3D Enhance, Create & Batch processing
NXPDF-I2	NX Publish 3D create
NXCA5-A2	NX to CATIA V5 PDF Add-on Module

Supported Application Revisions

The following application revisions have been qualified with this release.

Application	Revision
Siemens NX	NX 2212
	NX 2306
	NX 2312
	NX 2406
	NX 2412
Adobe Reader	Adobe Reader 7.0 and above

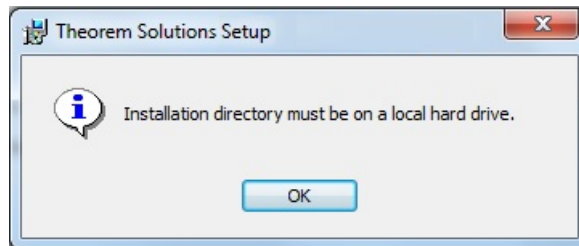
Supported Operating Systems

The following operating systems have been qualified with this release

Operating System	Qualification Status
Windows 10	Qualified and fully supported
Windows 11	Qualified and fully supported

Installation Process Considerations

Starting with version 20.0 of Theorem Solutions applications changes have been made to the installation process. These changes have transitioned from a JAVA based installer package to a standard Microsoft Installer (.msi) package. A current limitation of the Microsoft msi method is that the software cannot be installed directly on to either externally mapped or network drives when installed from a client machine:



Therefore, the installation must be performed to a drive that is local to the machine itself. If you are attempting to install the software onto a network drive, then please refer to the configuration guide available from the following link:

http://www.theorem.com/documentation/Documentation/Client_Configuration.pdf.

Distribution Media

CD images of the latest release are available from the following download site. The installation media for the bi-directional product is also the same media when installing a uni-directional variant.

Product Codes	Select link to download CD images
All Product Codes for all supported versions of NX	CAD 28.0 NXPDF WIN.01.msi
Theorem User Interface	CAD 28.0 UI WIN.01.msi
Theorem License Manager	CAD FLEXLM 11.19 WIN.01.msi

New Features / Enhancements

The following new features or enhancements have been introduced with this release.

NX<>3DPDF

Ref ID	New Feature / Enhancement Description
1	Added support for Siemens NX 2412
REQ-1106	Create a NXTVP CD for Xr customers who upload NX data
REQ-1357	XR when the password for TVP user account is entered into the config, it is stored in plain text in the log files.

Known Limitations and Restrictions

The following limitations and restrictions have been identified prior to release.

NX to 3DPDF (nxpdf)

Ref ID	Limitations and Restrictions
1	

NX to 3DPDF (nxpdf)

Ref ID	Limitations and Restrictions

General

Ref ID	Limitations and Restrictions


Resolved Support Calls

The following list of Support Calls are resolved with this release.


Support Call ID	Brief Description




UK, Europe and Asia Pacific Regions

 THEOREM HOUSE
MARSTON PARK
BONEHILL RD
TAMWORTH
B78 3HU
UNITED KINGDOM


 sales.theorem@techsoft3d.com

 +44 (0) 1827 305 350

USA and the America

 THEOREM SOLUTIONS INC
100 WEST BIG BEAVER
TROY
MICHIGAN
48084
USA

 sales-usa.theorem@techsoft3d.com

 +(513) 576 1100

 THEOREM.COM