



PRODUCT RELEASE ANNOUNCEMENT

Product Category	Visualize 3D
Product Group	CATIA V5 for JT
Product Release Version	21.1

Document Type	Product Release Announcement
Document Status	Released
Document Revision	2.0
Document Author	Product Manager
Document Issued	23/08/2018



Contents

History	2
Product Codes	3
Supported Application Revisions.....	4
Supported Operating Systems.....	4
Installation Process Considerations.....	5
Distribution Media.....	5
Related Distribution Media	5
New Features / Enhancements	7
CATIA V5 to JT (CA5JT).....	7
JT to CATIA V5 (JTCA5).....	8
Known Limitations and Restrictions	10
CATIA V5 to JT (CA5JT).....	10
JT to CATIA V5 (JTCA5).....	10
General	10
Resolved Support Calls	12



History

Revision	Update Information
1.0	Initial document release for Version 21.1
2.0	Updated following the bug fixes implemented to resolve the issue of interactively exporting JT data from within CATIA using a selected Configuration file. CD link updated to download updated install CAD_21.1_CA5JT_WIN.03



Product Codes

Product Code	Product Description
CA5JT-U1	CATIA V5 (CAA Based) to JT (uni-directional)
JTCA5-U1	JT to CATIA V5 (CAA Based) (uni-directional)
CA5JT-A5	CATIA V5 (CAA Based) to JT (uni-directional) with PMI Add On
CA5JT-A6	CATIA V5 (CAA Based) to JT (uni-directional) with Electrical Add On
CA5JT-A7	CATIA V5 (CAA Based) to JT (uni-directional) with 3D PDF Add On
JTCA5-A1	JT to CATIA V5 (CAA Based) (uni-directional) with 3DPDF Add On
JTCA5-A2	JT to CATIA V5 (CAA Based) (uni-directional) with 3DXML Export Module
CATJT-U1	CATIA V4 to JT (uni-directional)
CAGJT-U1	Combined CATIA V4 & CATIA V5 to JT (uni-directional)
CAGJT-U2	Combined CATIA V4 & CATIA V5 to JT (uni-directional) with PMI Add On



Supported Application Revisions

The following application revisions have been qualified with this release

Application	Revision
CATIA V4	All revisions
CATIA V5	CATIA V5-6R2015, CATIA V5-6R2016, CATIA V5-6R2017 & CATIA V5-6R2018
JTOpen	JTK 9.0.0.0

Supported Operating Systems

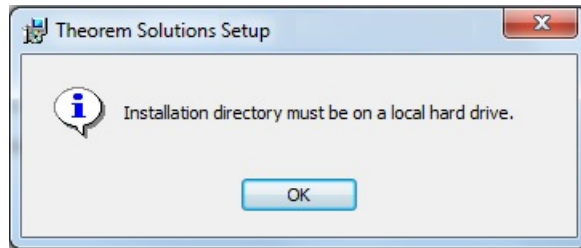
The following operating systems have been qualified with this release

Operating System	Qualification Status
Windows 7 64bit	Qualified and fully supported (All CATIA Revisions)
Window 8 64bit	Qualified and fully supported for CATIA V4, CATIA V5-6R2015, CATIA V5-6R2016, CATIA V5-6R2017 & CATIA V5-6R2018
Windows Server 2008 R2	Qualified and fully supported for CATIA V4, CATIA V5-6R2015, CATIA V5-6R2016, CATIA V5-6R2017 & CATIA V5-6R2018
Windows Server 2012	Qualified and fully supported for CATIA V4, CATIA V5-6R2015, CATIA V5-6R2016, CATIA V5-6R2017 & CATIA V5-6R2018
Window 10 64bit	Qualified and fully supported for CATIA V4, V5-6R2016, CATIA V5-6R2017 & V5-62018.



Installation Process Considerations

Starting with version 20.0 of Theorem Solutions applications changes have been made to the installation process. These changes have transitioned from a JAVA based installer package to a standard Microsoft Installer (.msi) package. A current limitation of the Microsoft msi method is that the software cannot be installed directly on to either externally mapped or network drives when installed from a client machine:



Therefore, the installation must be performed to a drive that is local to the machine itself.

If you are attempting to install the software onto a network drive, then please refer to the configuration guide available from the following link
http://www.theorem.com/documentation/Documentation/Client_Configuration.pdf.

Distribution Media

CD images of the latest release are available from the following download site. The installation media for the bi-directional product is also the same media when installing a uni-directional variant.

Product Codes	Select link to download CD images
All Product Codes for all supported versions of CATIA V5	https://s3-eu-west-1.amazonaws.com/theorem.software/CADverter_21.1/CAD_21.1_CA5JT_WIN.03.msi

Related Distribution Media

In addition to the translator software itself there are also two other related media distributions available. One is for the installation and configuration of the Theorem User Interface. This is designed as a free-standing user interface for the translator allowing the user to navigate the file system and initiate translations either interactively or in batch using standard drag and drop techniques. The second media distribution contains the Theorem License Manager which is installed on the nominated license server(s) and manages the user access to the purchased volume of concurrent Theorem application licenses.



PRODUCT RELEASE ANNOUNCEMENT



Related Package	URL for CD image download
Theorem User Interface	https://s3-eu-west-1.amazonaws.com/theorem.software/CADverter_21.1/CAD_21.1_UI_WIN.01.msi
Theorem License Manager	https://s3-eu-west-1.amazonaws.com/theorem.software/LicenseManager/CAD_FLEXLM_11.14_WIN.01.msi



New Features / Enhancements

The following new features or enhancements have been introduced with this release

CATIA V5 to JT (CA5JT)

Ref ID	New Feature / Enhancement Description
1	Support for CATIA V5-6R2018 has been implemented with this release
2	The default JT configuration file is now named tess.config . The structure of this file is such that it now supports all variants of CAD to JT translator requirements. The sections of the file that are relevant to the CATIA V5 to JT translator are; JtOptions (for all Theorem related settings that influence the JT output), Catia5Options (for all Theorem related CATIA V5 data read settings), Catia4Options (used to control the processing of any subordinate CATIA V4 native .model files) & GeneralOptions (used to select any general output processing requirements)
3	When writing JT output the assembly representation can now be written as either STEP AP242 BOM Edition 1 or STEP AP242 BOM Edition 1-TC (Technical Corrigendum) format
4	The option to control the JT instance names based upon the CATIA V5 Node Customization settings now support the enhancement to allow the use of User Defined attributes as part of the output naming. There are two methods available; When setting the customization within CATIA V5 and therefore the setting is stored within the active users CATSettings use the options use_instance_names instance_naming V5 . Alternatively you can specify the specific instance naming convention on the command line using a combination of system settings and user attribute values e.g. use_instance_names instance_naming "#PN# #@ATTR_NAME@#" where ATTR_NAME would be the specific attribute name available within the CATIA V5 data
5	There is a new menu page available from the CATIA V5 menus Tools>Options>Infrastructure>Theorem>CAA Export JT . This allows the selection of a predefined CADverter Configuration page to control the exporting of JT data from within the CATIA V5 environment. There are two mechanisms available for creating CADverter Configurations. One is to use the CADverter Unified Interface, another is the use of the Configuration Manager Interface.
6	JT files can now be directly exported from within CATIA V5 using the File>SaveAs menu and selecting the JT file format. The settings of the JT export process are defined using the currently selected CADverter



	Configuration defined in the Tools>Options>Infrastructure>Theorem>CAA Export JT menu
7	Changes to the method of defining the JT entity “moniker” from the CATIA V5 Face ID# to the CATIA V5 Underlying Surface ID#. This change maintains the JT entity “moniker” for iterations of the CATIA V5 model and subsequent sequential JT file exports
8	By default CATIA V5 System and User Properties are now automatically exported. To disable this feature use the option attr_off
9	When exporting CATIA V5 data to JT the exporting of the CATIA V5 properties has been enhanced by using a default property mapping table, %TS_INST%\data\jt_property_mapping.txt . This facility allows the user to control which properties are exported and also enables the property name to be modified as part of the export process.
10	The labels for the system defined JT Properties have been modified to match the ProSTEP Recommended Practices for JT property names.
11	The Large Assembly Processing mechanism has been enhanced to include the ability to write the JT data using either PER_PART, PLMXML or STEP_BOM format output in addition to the previously supported FULL_SHATTER method

JT to CATIA V5 (JTCA5)

Ref ID	New Feature / Enhancement Description
1	Support for CATIA V5-6R2018 has been implemented with this release
2	The progress file output generated when reading JT files to create CATIA V5 output previously reported all of the JT attributes as part of the file processing. Although this output may be beneficial when trying to investigate a translation issue in the majority of cases the information is not required. Therefore, these properties are no longer recorded in the progress file unless the optional argument debug is used.
3	When reading JT datasets the translator is now able to read the assembly structure using either a STEP AP242 Edition 1 or STEP AP242 Edition 1-TC (Technical Corrigendum) format
4	When processing JT files to CGR output where the that JT data references empty JT parts the command line option create_empty_file will now create empty CGR files in the output. With previous releases the empty JT nodes were omitted from the output.



5	<p>There is a new menu page available from the CATIA V5 menus Tools>Options>Infrastructure>Theorem>CAA Import JT. This allows the selection of a predefined CADverter Configuration page to control the importing of JT data from within the CATIA V5 environment. There are two mechanisms available for creating CADverter Configurations. One is to use the CADverter Unified Interface, another is the use of the Configuration Manager Interface.</p>
6	<p>JT files can now be directly opened from within CATIA V5 using the File>Open menu and selecting the JT file format. The settings of the JT import process are defined using the currently selected CADverter Configuration defined in the Tools>Options>Infrastructure>Theorem>CAA Import JT menu</p>
7	<p>By default all JT Properties are now automatically exported. To disable this feature use the option attr_off</p>
8	<p>When exporting JT data to CATIA V5 the exporting of the JT properties has been enhanced to enable the use a property mapping table. This facility allows the user to control which properties are exported and also enables the property name to be modified as part of the export process. To enable this feature use the option cad_prop_map_file followed by the name of the mapping file to be used. There is an example mapping file provided that documents the format and shows example settings %TS_INST%\data\jt_property_mapping.txt.</p>



Known Limitations and Restrictions

The following limitations and restrictions have been identified during final testing prior to release

CATIA V5 to JT (CA5JT)

Ref Limitations and Restrictions ID

1	The Theorem FLEXIm license manager for this release should be updated to the latest release available. See section on “Related Distribution Media”
2	When running a Large Assembly Process with FULL_SHATTER output format there is an erroneous error flagged raised at the end of the process. This normally can be ignored and the output will have been created correctly.

JT to CATIA V5 (JTCA5)

Ref Limitations and Restrictions ID

1	The Theorem FLEXIm license manager for this release should be updated to the latest release available. See section on “Related Distribution Media”
2	When processing JT assemblies that reference multiple occurrences of parts and the output mode is set to create CGR output each occurrence of the JT parts are created with unique CGR filenames. Each of the files will have a sequential number added to its name. To force the creation of single CGR files to represent every occurrence set the environment variable TS_CATIA_UNIQUE_CGR=1 prior to running the translator.

General

Ref Limitations and Restrictions ID

1	<p>The ‘Theorem Help v21.1’ shortcut provided in the Windows Start Menu is incorrect. It currently looks for help.html in %Installation_Directory%/guides when the file is in %Installation_Direcotry%.</p> <p>This can be rectified by:</p>
----------	--



- Locate the Start Menu item (Theorem Help v21.1)
- Right Click and then select Properties
- In the 'Target' selection box, update the location to be "C:\Program Files\Theorem\21.1\help.html"
- Select 'Apply'

Resolved Support Calls

The following list of Support Calls are resolved with this release

Support Call ID	Brief Description
CAS-03340-B6B6F8	JT to V5 translation crashing
CAS-03387-F2L5B3	Missing dimension semantic properties for "27 x" dimension prefix text
CAS-03404-Z4G0Z7	Processing CATIA V4 model with CATIA V5 to JT hangs during the CATIA read process
CAS-03459-Z6M9M7	CATIA V5 to JT moniker ID's are not maintained when the model is subsequently changed
CAS-03460-C5Y1B8	Large blocks of text are split into separate blocks and the sequence of the text is reordered.
CAS-03525-N1R2Z6	Unable to read PLMXML instance colours. This resolution requires the use of the create_occurrences option when processing data with instance related colours applied.
CAS-03589-V7S5R4	Unable to interactively save JT output using tessDAIMLER.config
CAS-03682-M3B2W6	Unable to use existing configuration files following upgrade to 21.1 release when saving JT data interactively

